

AOFemto Jericho Series

Industrial Green femtosecond laser

- < Pulse width < 800 fs
- < Beam roundness up to 95%
- < Maximum output power up to 30 W
- < Both edge trigger and level trigger are available
- < SYNC output function available
- < Reliable pulse stability (<2%)

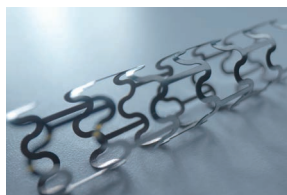


► Features & Benefits:

AOFemto Jericho femtosecond Green lasers feature excellent beam quality ($M^2 < 1.2$) with a beam roundness up to 95%. The pulse stability and power stability of the laser are excellent. The output power of the laser is in the range from 5 W to 30 W.

The lasers can be controlled via external trigger signals. Both high/low level trigger and rising/falling edge trigger are available. The rising/falling edge trigger mode enables Pulse-on-demand (POD) functionality. In addition, the output power of the laser can be controlled through external analog voltage signal.

With a pulse width of <800fs, there is almost no heat damage during processing. The AOFemto Jericho femtosecond green lasers are suitable for high-precision laser micro-machining applications, including medical device manufacturing, Nitinol metal cutting, polymer material cutting and drilling, and so on.



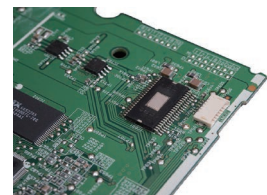
Medical device manufacturing



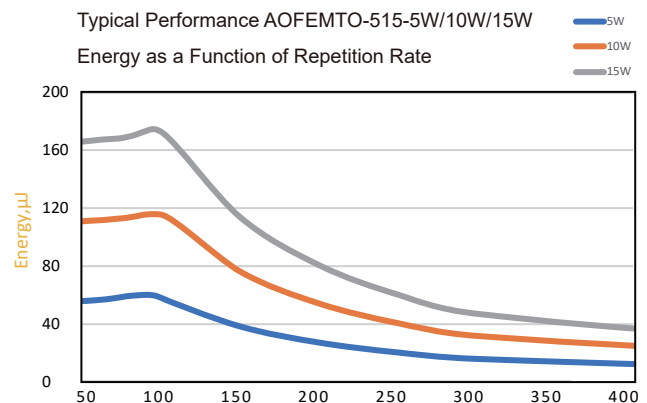
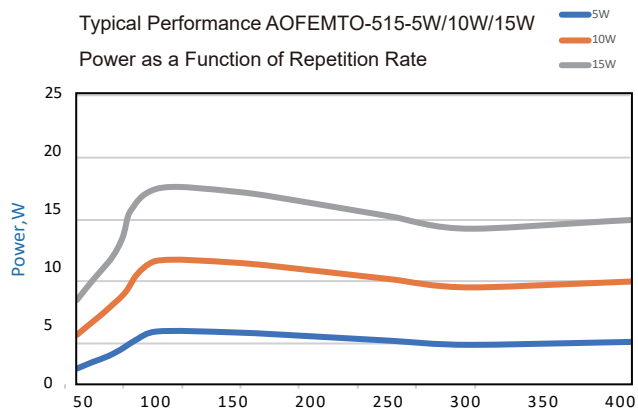
Balloon hole drilling



High-accuracy/High-speed/
Micro-machining



Semiconductor/Solar processing/
Wafer scribing



| AOFEMTO Jericho 515 | | | |
|-----------------------------------------|-------------------------|------------|------------|
| Specification | 5W-100K | 10W-100K | 15W-100K |
| Wavelength (nm) | 515 | | |
| Average Power (Watts) | > 5W@100KHz | >10@100KHz | >15@100KHz |
| Energy (μJ) | > 50 | > 100 | > 150 |
| Specified Repetition Rate(kHz) | 100 | 100 | 100 |
| Repetition Rate (kHz) | 100k-1M | | |
| Pulse Width (fs) | < 800 | | |
| Beam Quality (M ²) | < 1.2 | | |
| Beam Roundness (%) | > 90 | | |
| Beam Diameter (mm) | < 3 | | |
| Beam Divergence (mRad) | < 2 | | |
| Point Stability (μrad/°C) | < 50 | | |
| Polarization Ratio | 100:1 Linear,Horizontal | | |
| Pulse-to-Pulse Stability (% RMS) | < 2% RMS over 10hours | | |
| Average Power Stability(% over12 hours) | < 3 | | |
| Cold Start Warm-Up (mins.) | < 45 | | |
| Standby Warm-Up (mins.) | < 15 | | |
| Operational Temperature Range (°C) | 15 to 35 | | |
| Operation Humidity Range (%) | 20 to 80,Non-condensing | | |
| Storage Temperature Range (°C) | - 20 to 50 | | |
| Storage Humidity Range (%) | 20 to 80,Non-condensing | | |
| Input Voltage (VDC)/Rated Power(W) | 24 / 1000 | | |
| Communication | RS232 | | |
| Cooling | Water | | |

AOFemto Jericho SERIES

AOFEMTO Laser CAD Drawing

